



West Wight Timebank September 2023

Please come and support us at the **Coffee Morning** coming up this **Saturday (9th)**



Coffee Morning

Saturday 9th September at 10:30am-12:30pm

Freshwater Methodist Church



In aid of the West Wight Timebank



Could you host a coffee morning to raise some funds for the Timebank?

Olga has kindly offered and is planning a September coffee morning to raise a little extra money that we can donate to Christchurch, as we use the Annexe for our Dementia carers friendship group.

IOW Funding



Sally is pleased to say that the IOW council have awarded £4,175 to the Timebank so that she can purchase food from Faith's Junk Food Van every week until the end of March next year to support 10 local families who are struggling.

In addition, each month the nominated families will receive a box of hygiene products, purchased through 'In Kind Direct' to help them cope through any financial difficulties associated with the current cost of living crisis.



Sally will be making up the food and hygiene parcels each week at the Parish Hall at 9.30 am. If anyone wishes to help they would be very welcome.

Earn time credits at the Community Market

In addition to the hygiene parcels for nominated families, at the Community market, led by Davina, we are actively making bags with essential hygiene products that are available for anyone who is finding things a bit tight at the moment.

If anyone would like to donate some nice toiletries for these bags it would be great.

The hygiene packs are available every week at the Parish Hall, along with Faith's 'Pay as you feel' food and our Pet pantry and Drop and Swap goods.

Angie and Alma also hold a weekly pet pantry on a Monday at the Annexe Christ Church from 1-2pm and at both venues have had 42 people taking much needed food for their cats and dogs.

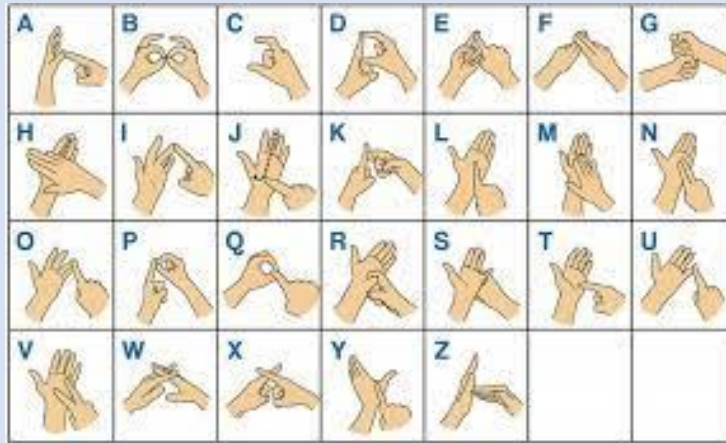
West Wight Timebank's Workshops

Most of you will have received your own copy of the Timebank workshops programme now, and Sally has been so pleased at the responses both to the workshops and the scores she has been receiving for the 'impact' members feel the Timebank is having on the West Wight.

Please continue to give Sally your score if you haven't managed to do so yet, as this is important for her to assess what she does and will also be used in the chairs report at the AGM and go into future funding applications.



Sign language course



There are 3 places available on Rachael's Sign Language course which starts on September 15th from 10.30 to 11.30 at the Parish Hall. These have proved to be very popular and extremely good fun so do have a go. Just ring Sally to book your place.

Eco-friendly Refill Scheme



We are encouraging everyone to reuse their plastic bottles to help the environment. Pop along with your empty bottles to the hall to see our range of products between 1 and 3 pm on a Friday. We have washing up liquid, laundry liquid, fabric conditioner, all -purpose cleaner, toilet cleaner, cream cleaner, handwash, shampoo, conditioner, shower gel, body lotion and a variety of soaps and loofah products. The refill is also at the library on the first Friday morning of each month and at Seely Hall in Brook on alternate months at their Monday (first of the month) coffee mornings. Contact Gina on 07790 329859 for more details or to arrange a delivery if you can't get to any of the venues. Clean empty bottles for any of these products are always welcome too.



Requests

Please continue to collect the bags from the inside of the cereal pack that Angie and Alma can use for the pet food.

The Drop and Swap table encourages all to reuse, recycle and exchange goods in our community. Please do contribute good quality household items (no electrical items please).

Individuals using the exchange must take full responsibility for the goods they take away. Timebank Members will check the condition of all donated items to ensure that they are suitable for exchange, but are not responsible for any loss or damage sustained thereafter.

No items donated to the Drop and Swap scheme will be sold by the West Wight Timebank.

Beautiful hand- made cards

We have a new selection of Margarets handmade cards now available to buy.

Regular Activities at our Community Market:

Recycling, please bring: All types of pens, ink cartridges, cellophane wrappers from greeting cards, used postage stamps along to the Parish Hall on a Friday afternoon.

Sue's craft table

Sue's ideas are fantastic and each week you can try something new.



The activities are free for members, who will now use their time credits to 'pay' for the session. So, if you spend 2 hours crafting with Sue, you will spend 2 time credits.

Non-members will be asked to contribute to the cost of the materials used each week.

FORTHCOMING LUNCHES at the hall-

We are arranging these currently so more information to follow - keep an eye on the notice board in the hall.



We have started a Timebank choir and have the pleasure of being accompanied by Jenny on her accordion.

If you would like to join us in September 22nd at 12 noon we will be singing songs from the last night of the proms.

INVITATION TO ALL

PUBLICITY EVENT FOR THE TIMEBANK

On Tues 12 September the Parish Hall committee are holding a Consultation Evening at the Parish Hall from 1700 to 1845 to raise awareness of the urgent need to refurbish the Hall and to hear their vision for the future.



It will be open to the general public and will be represented by local shops and businesses, community services and the Parish Council.

As regular users of the Hall, the West Wight Timebank will be represented with some advertising/marketing information, banners etc to show the range of activities held in the Hall. We will be there from 12 noon to talk to potential new members.

If you would like to come and help Sally anytime from 12 noon onwards, please let her know.

Please do come to the hall at 5pm to support the Timebank and the event.

Fundraising event next year

In June 2024 the West Wight Timebank will be showcasing some of the schemes we run during a fashion show designed to raise funds for the Parish Hall refurbishment fund and a little for the Timebank too.

Lesley is to be our stage manager 😊

One of our first group activities for the show will be to tie-die some white T-shirts using beetroot, carrot and onion from the allotment.

If you would like to help us to do this, please let Sally know, and if you would like to get involved in the planning for the evening, you would be most welcome.

The next planning meeting will be on Thursday October 19th at 9am at WWSCC.



Angie and Sally completed an accredited First Aid course recently so are the Timebank's nominated First Aiders at events and planned sessions.

Jo and Sally are the trained Advice First Aiders.

Further funding for our Timebank

John, from Timebank UK, has been commissioned by Sally (with additional funds offered from the Reaching Communities team) to help her to research and apply for appropriate ongoing funding. He is now working on our behalf and this month will be applying to the Postcode Lottery and the Finnis Scott Foundation. The funds are specifically required to enable us to continue to run the Timebank as it is, develop and resource new schemes and continue to build a stronger more resilient community.

New members

Welcome to Jean, Shane, Raye and Alli

Our 'dip in and dip out' philosophy makes Timebanking the perfect option for all to do something enjoyable in our community



Time exchanges: Members hours exchanged this month: 235 (as we have had a 2 week break from many activities this month).

**Our total exchanges now stand at
20,408 since we started nearly 8 years
ago 😊**

Request

Has anyone got some storage space they could offer a member for a chest of drawers and a paddle board please?

Garden Scheme



The new annual gardening calendar is now ready for you to book your gardening request, any month between November 2023 and August 2024.

Please ring Sally to give her an idea of what jobs you may need help with and choose the month - on the second Thursday between 9 and 1pm. She will arrange the rest.



Whatsapp Groups and social media



As the Timebank schemes mature and the members start to plan their own times to meet, we have found it helpful to use Whatsapp to share info together.

We now have a book group, allotment group and litter picking group that post so all members involved can see the details of the time transactions.

They then let Sally know how many hours/credits they are due.

Since Carly started to share posts about the eco refill scheme, we have seen raised numbers visiting the scheme 😊

The info goes out to:

Totland and Freshwater com

Isle of Wight Overners

Isle of Wight Community

Shalfleet and Newtown Isle

West Wight notice board

Journey to zero waste Isle

What's on- Isle of Wight

Lets buy local open air



[Yarmouth Freshwater ww](#)

[Community Events and things](#)

[Isle of Wight Events page](#)

Book Groups



The next book group at Gina's house is on October 31st at 2pm to discuss *A Terrible Kindness* by Jo Browning Wroe.

Please ask Gina if you would like to be added to the Whatsapp group.

Cathy's book group is also available for you to join. They are reviewing *One Day* by David Nicholls - a light hearted book this time 😊 on 26th Sept.

Please call Sally for more details.

Risk Assessments

Please be assured that Sally will always consider how risks can be minimised when undertaking activities and time exchanges.

However, the general rules that always apply for any individual or group time transactions are:

If you are not sure, don't do it. If you don't feel safe, don't do it.



Timebanking group activities for September 2023 at a glance

Mon	4 Dementia Carers Friendship Group (DCFG) 11 to 2pm Pet pantry The Annexe Christchurch 1-2pm	11 Dementia Carers Friendship Group (DCFG) 11 to 2pm Pet pantry The Annexe Christchurch 1-2pm	18 Dementia Carers Friendship Group (DCFG) 11 to 2pm Pet pantry The Annexe Christchurch 1-2pm	25 Dementia Carers Friendship Group (DCFG) 11 to 2pm Pet pantry The Annexe Christchurch 1-2pm	
Tues	5 Allotment 10 to 12 noon	12 Allotment 10 to 12 noon	19 Allotment 10 to 12 noon	26 Allotment 10 to 12 noon Cathys book club	
Wed	6	13	20	27	
Thur	7	14 Garden scheme at Sues	21	28	
Fri	8 1-3pm	15 Sign language	22 1-3pm	29 1-3pm	



	Community Market at the Parish Hall 2-3pm Faith's Food van	week 1 10.30 to 11.30 Parish Hall 1-3pm Community Market at the Parish Hall 2-3pm Faith's Food van	Community Market at the Parish Hall 2-3pm Faith's Food van	Community Market at the Parish Hall 2-3pm Faith's Food van	
--	------------------------------------------------------------------	-------------------------------------------------------------------------------------------------------------------------------------------	------------------------------------------------------------------	---------------------------------------------------------------------------------------	--